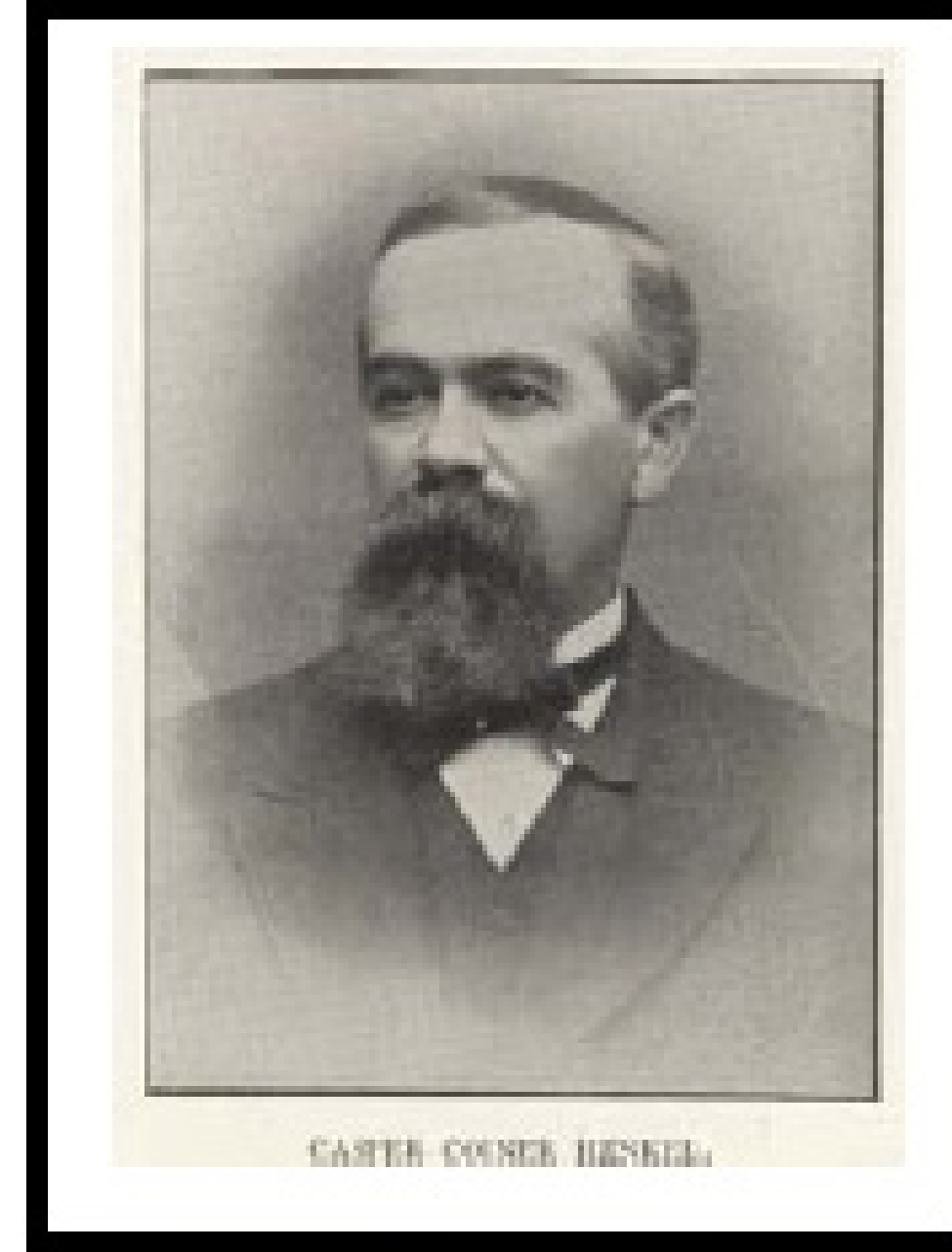




# Nova Southeastern University Health Professions Division Library - Central Aisle -



**THE HENKEL  
PHYSICIANS**  
α **FAMILY'S LIFE in LETTERS**



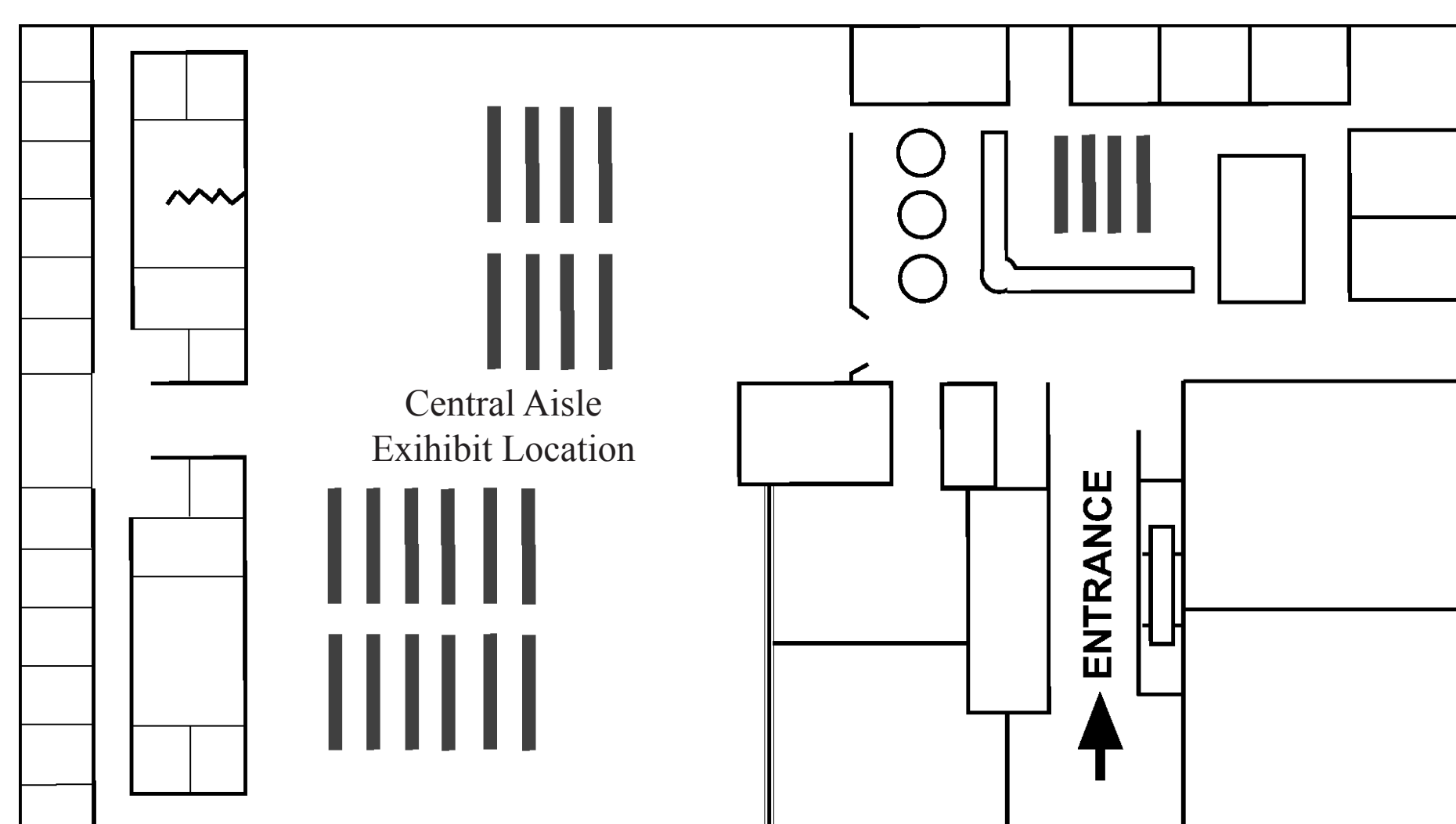
**An exhibition developed and produced by the  
National Library of Medicine**

**Monday March 25<sup>th</sup>  
to  
Wednesday May 1<sup>st</sup>, 2013**

**Open to the Public**

Nova Southeastern University  
Health Professions Division Library  
Library / Lab Building (3) 1<sup>st</sup> Floor  
3200 S. University Drive  
Ft. Lauderdale, FL 33328

For information contact the HPD Library: (954)262-3106  
<http://nova.campusguides.com/henkelexhibit>



*This exhibition was produced by the  
National Library of Medicine  
National Institutes of Health  
Curated by Jim Labosier  
Designed by Riggs Ward Design*

<http://www.nlm.nih.gov/hmd/digicolls/henkel/index.html>